



# VirTex: Southwest

VirTex is a trusted technology partner that provides strategic Electronic Manufacturing Services (EMS) to our customer base. VirTex increases the competitive position of your product with a smart and simplified regional supply chain solution across the production lifecycle by focusing on and reflecting your **vision**.

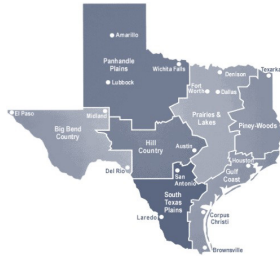
## Facility Introduction

**Location:** VirTex  
12234 North IH-35, Bldg A  
Austin, TX 78753

**Size:** 65,000 (sq ft)

**Contact Information:** +1 512-835-6772

**Key Skills:** Bringing products to commercialization from prototyping of PCBAs to 'one-off' enclosures, to full turnkey integrated systems shipped direct to customers and/or end-users.



## 5 Customer Commitments of VirTex

- Committed to superior execution at every stage
- Committed to driving smart supply chain solutions
- Committed to making it easy for our customers to do business with us
- Committed to being in the market to serve the market
- Committed to increasing our customers' competitiveness

## Facility Capabilities

### Design.

Fully comprehensive design service through strategic design partnership agreements, to ensure all market needs are met, including processes and test design for a highly diversified market.

VirTex services include:

- PCB services using PLM and CAM software
- DFM / DFT review using CAM software
- Verifies document accuracies
- Process is aligned with IPC standards
- Design validation layout
- NPI services
- Fast turn around time
- Formal design review process

### Develop.

Provides prototypes, NPI and industrialization services, along with vertically integrated manufacturing capabilities. Site competencies include; metal fabrication, PCBA and backplane assembly, box build, complex system integration and test which provide our customers with high quality, competitively priced and short lead-time products. This unique combination of capabilities enables customers to realize increased savings and the benefits of a single site management team.

- Supply chain optimization & production lifecycle management,
- PCB Assmby, box-build, cable harness & wiring
- Box-Build services organized into flexible & reconfigurable work cells
- Mechanical and Electro-mechanical assembly
- Conformal coating
- Build-to-order (BTO), configure-to-order (CTO) & Made to Stock





- Align supply chain to customer's needs via an ERP generated electronic inventory management program
- Multiple networked lines
- Three SMT PCB assembly lines with capabilities including: lead and lead-free assemblies, single and dual side reflows, intrusive reflow soldering

- Product validation and production testing services including: AOI, flying probe, in-circuit test, burn in, RF and system level testing
- Supply chain solutions, PCBA, test development and validation and box-build integration

**Distribute.**

Delivering products and services direct to both customers and end-users is part of VirTex end-to-end supply chain solution.

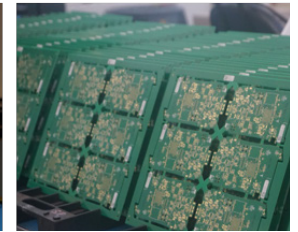
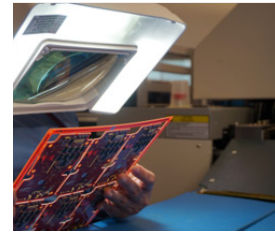
- Raw material ordered and drop shipped from vendors to our 3PL partner
- Inspection, verification and classification with HTS code
- Material is secured, loaded and shipped
- Packaging for land, air and sea freight

- Import and Export document handling
- Custom fulfillment and drop ship to multiple locations (end users, retail stores, merge and distribution centers)
- All import, export, transportation, scheduling, classification and customs clearance functions are handled 100% by VirTex.

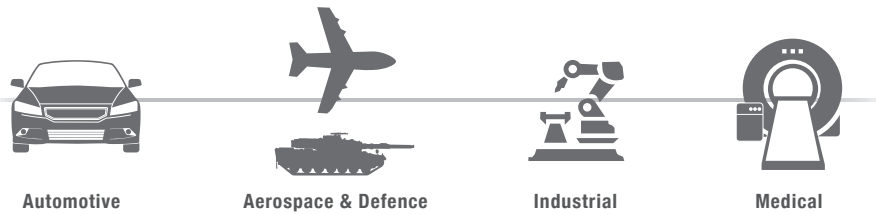
**After-Market.**

VirTex provides a range of product return services that include

- In and out of warranty services
- Direct ship to customer
- Advance replenishment
- Product upgrade
- Engineering change implementation
- FDA risk assessment and mitigation



**Markets Served.**



**Quality**

VirTex is committed to zero-defect production, supported by Lean/Six Sigma methods. Certificates in place to support these efforts are:

Certificates in place to support these efforts are:

- ISO 13485 • ISO 9001 • FDA 21 • CFR 820 • ROHS & WEE Compliance • ITAR Registration
- J-STD-001 / Class II & Class III Manufacturing • IPC 610 Class II & III Manufacturing • ANSI ESD S20.20

**Customer Focused**

*"Our aim - efficient production, reducing lead time, VirTex exceeded our expectations with a lead time reduction of 65% and a production yield improvement of 15%" - Industrial OEM*

*"You have been extremely flexible in accommodating changes in our demand forecast. Communications are excellent!" - Medical OEM*

*"We consolidated spend and streamlined supply chain via a vertically integrated solution and achieved complete end-to-end supply chain visibility, thank you VirTex" - Industrial OEM*

For more information, please visit [virtexassembly.com](http://virtexassembly.com) or follow us on Twitter @VirTexEMS

VirTex is a leading end-to-end supply chain solutions company that delivers design, development and distribution services to a range of industries and end-markets, including data networking, telecom, enterprise computing and storage, industrial, capital equipment, appliances, automation, medical, automotive, aerospace and defense, energy, mobile, computing, kiosk and other electronic product categories.

Copyright © 2016, VirTex. All rights reserved. No part of this document may be reproduced in any form without the prior written permission of VirTex.



Vision. Value. VirTex.